



Publish – 3D View (Using Point Cloud – LAS or LAZ File)

September 2020

Recommended: Copy the point cloud file (LAS,LAZ) to your Project\results folder

Steps:

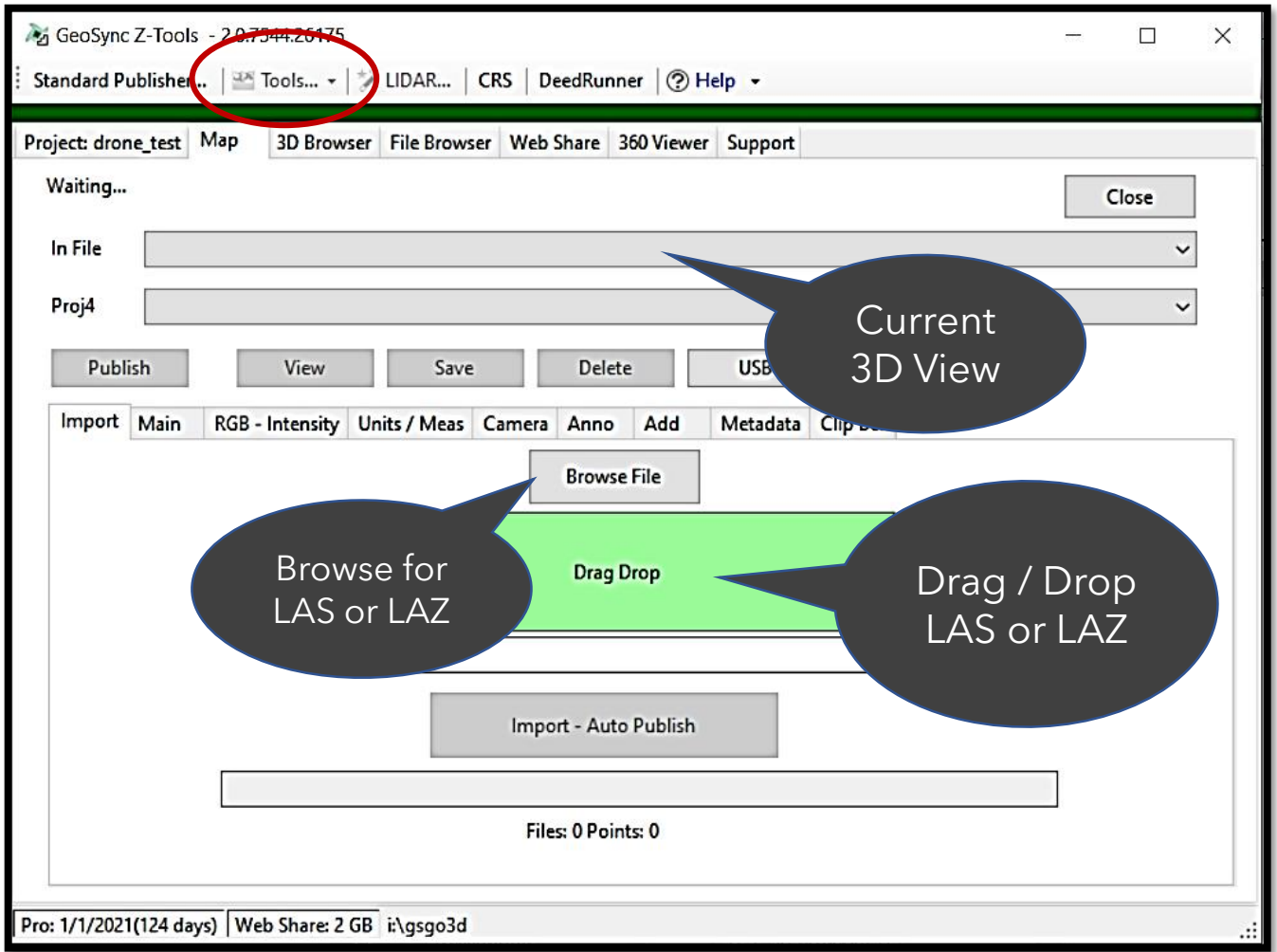
1. Map: From Tools Menu open Standard Publisher Tool
2. Import & Publish: Browse and select or drag/drop LAS/LAZ file and run Import & Publish
3. Change Settings: From “In File” combo-box set the current 3D View. Change the view settings and click view to save and preview

Step 1

STANDARD
PUBLISHER



GeoSync Z-Tools



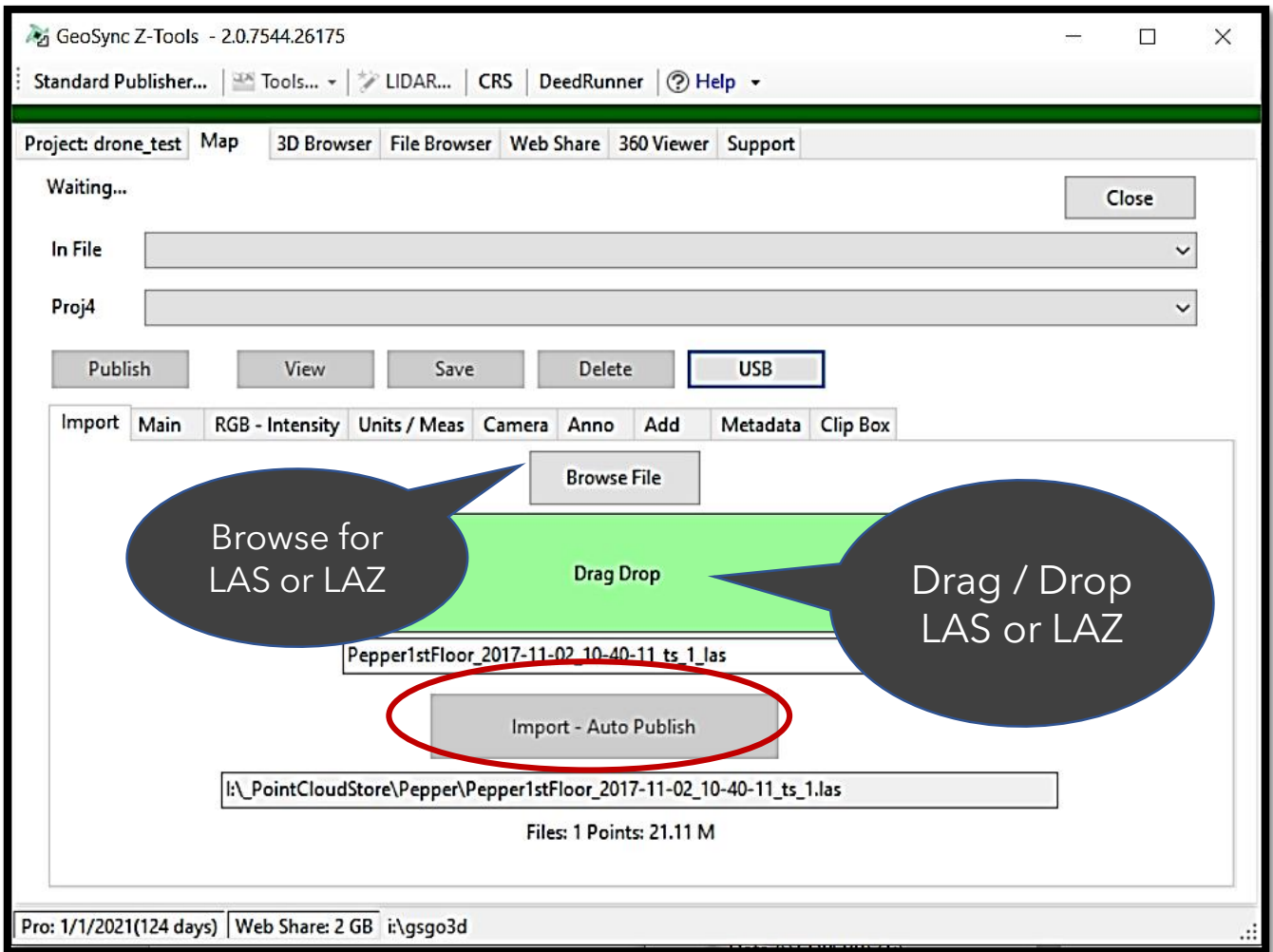
1. Requires Pro+ license
2. Set current a previously published point cloud or
3. Browse to a point cloud file in the project folders or
4. Drag & Drop a point cloud from anywhere on your computer

Step 2

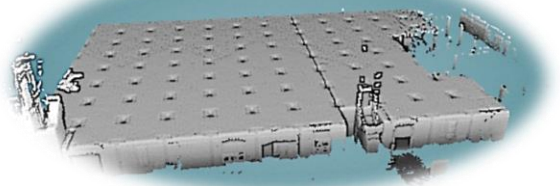
IMPORT & PUBLISH



GeoSync Z-Tools



1. Browse to a point cloud file in the project folders or
2. Drag & Drop a point cloud from anywhere on your computer
3. Click Import - Auto Publish Button
 1. LAS / LAZ file will be imported to 3D View folder
 2. A 3D View will be created and displayed
 3. The 3D View be set Current
 4. Click View to re-open





Import **Main** RGB - Intensity Units / Meas Camera Anno Add Metadata Clip Box

Point Cloud:	pepper1stfloor_2017-11-02_10-40-11_ts_1_las-43054199		
Doc Name:	pepper1stfloor_2017-11-02_10-40-11_ts_1_las-43054199.html		
Title:	Pepper1stFloor_2017-11-02_10-40-11_ts_1_las		
Background:	gradient	Size: 1	FOV: 60
Point Budget:	3*1000*1000	Min: -10.06	Max: 76.8750
Color Type:	HEIGHT	Grad:	SPECTRAL
Size Type:	FIXED	<input checked="" type="checkbox"/> EDL	S: 0.4 R: 2.4

- Spectral
- Viridis
- Plasma
- Gray Scale
- Rainbow

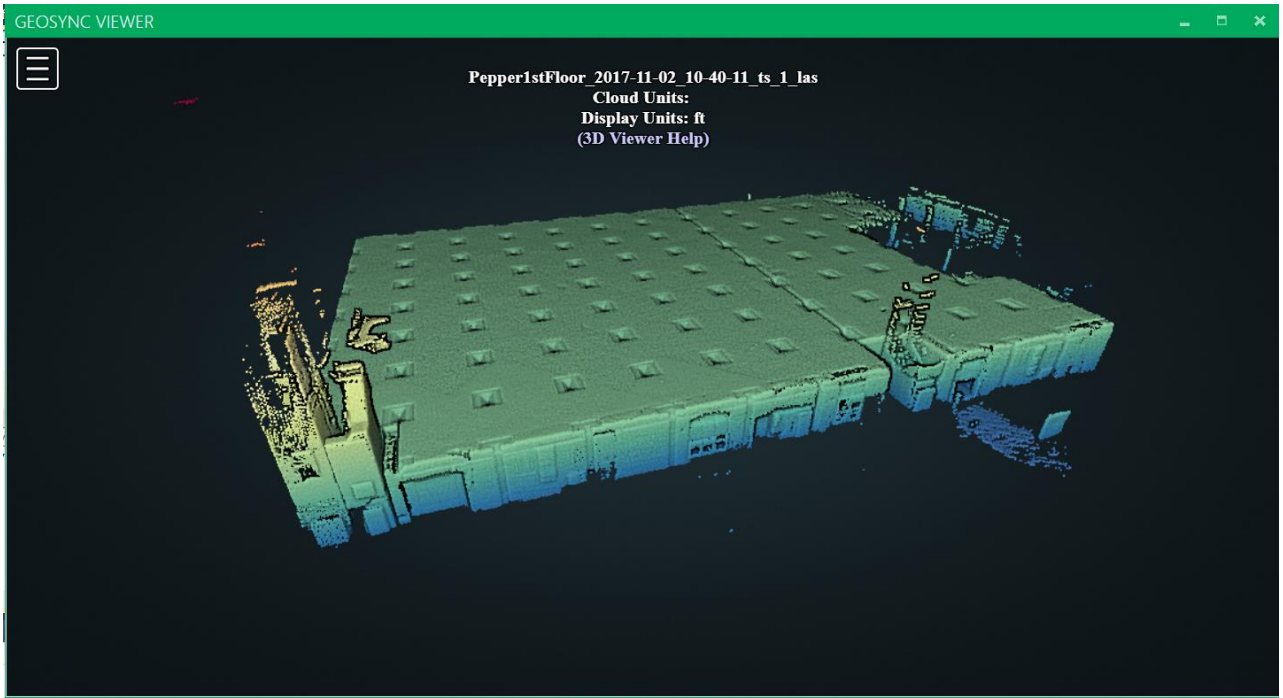
Gradient Scheme:



1. Set Current 3D View - In File Combo Box
2. Using Options within the Tabs - customize view
 1. Main, RGB-Intensity, Unit/Meas, Camera, Anno, Add, Clip Box
3. Keys: Set Color Type
 1. RGB: if point cloud had color
 2. Height: render by elevation and set Grad
4. Click View to Save and Preview

Clip Box Option:

Turn on Clipping Box and Set Clip Option = "Clip_Inside"



With Clip Box Turn On

