

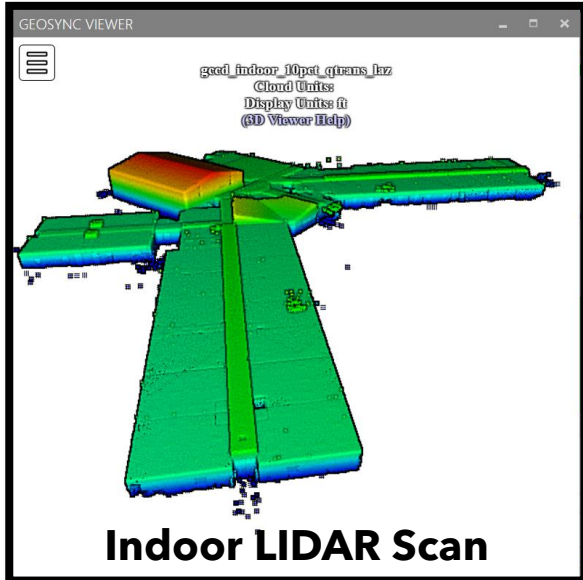
Easy to Use!

Point Cloud to GIS Floor Plan

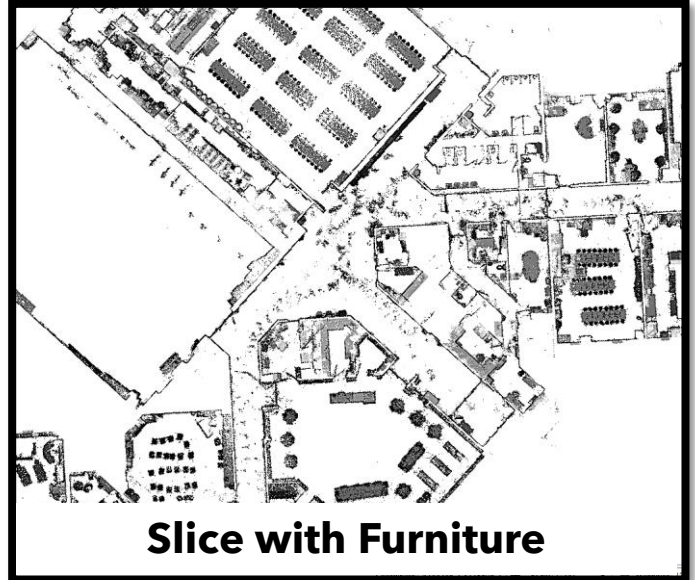
...slice indoor scans to create floor plan GeoTIF
...geo-reference and create room layer

Included with Base GeoSync Subscription

1 Z-Tools User . 1 Cloud Publisher User . 10 GB Storage . 10 Cloud Projects



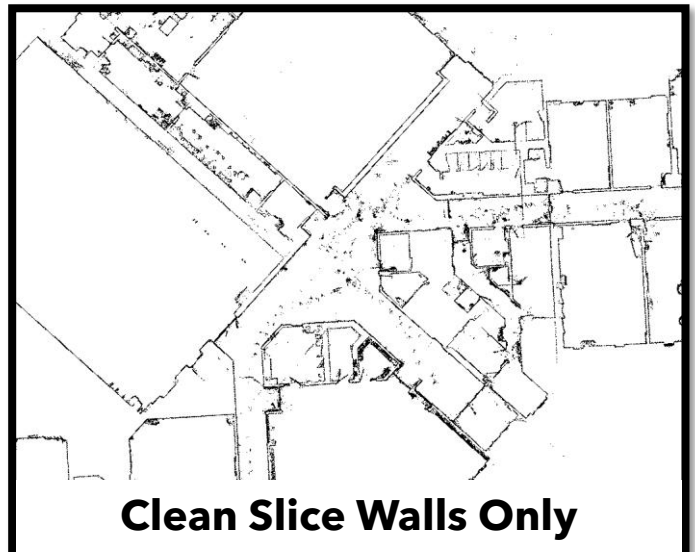
Indoor LIDAR Scan



Slice with Furniture

Using Z-Tools

- Process data on your local computer
- Quick and easy
- Utilize Interior Scan (LAS)
- Merge into single file
- Scale as needed (i.e. meters to feet)
- Georeference (Optional)
- Slice based on elevation
- Output GeoTIF (GIS / CADD Ready)
- Dimensionally accurate
- Send to GIS or CADD**
- Share using GeoSync Cloud**



Clean Slice Walls Only



Easy to Use!

Point Cloud to GIS Floor Plan

...slice indoor scans to create floor plan GeoTIF
...geo-reference and create room layer

Included with Base GeoSync Subscription

1 Z-Tools User . 1 Cloud Publisher User . 10 GB Storage . 10 Cloud Projects

Work Process Wizard – Step by Step

GeoSync Workflow

Setup UAV Data Indoor Data Georeference Floor Slices Notes

Setup steps for Indoor Scan Data

Indoor Merged Point Cloud (RAW)
gccd_indoor.laz

Indoor Merged Point Cloud (Units Good)
gccd_indoor_100pct.laz

Indoor Point Clouds Merged into Single LAZ

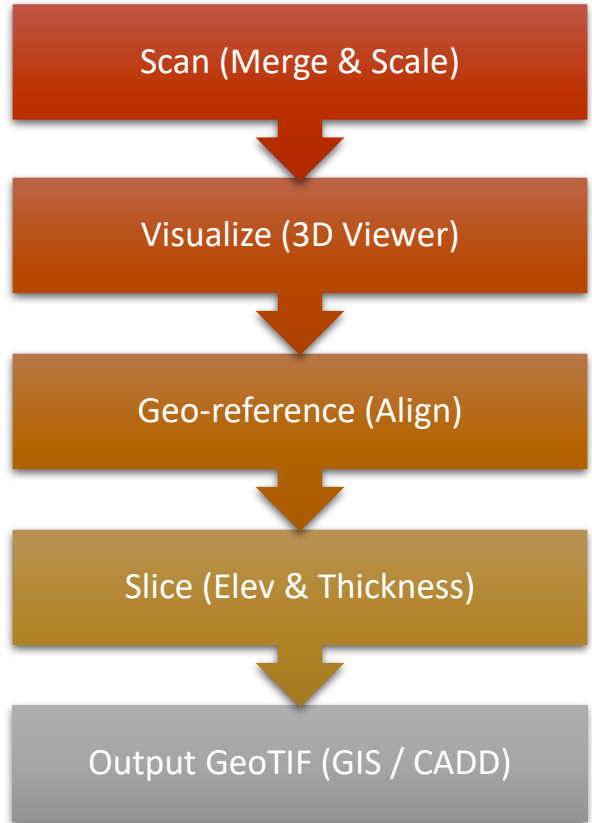
Indoor Units OK

Indoor 10% Created and Published (_10pct)

Indoor 50% Created and Published (_50pct)

First Floor Elevation - Indoor Scan
-0.95

- 1) Merge LAS Scans into a single LAZ (if needed)
- 2) Scale merged LAZ - meters to feet (if needed)
- 3) Record merged file names - place in work folder
- 4) Decimate merged to 10% and rename
- 5) Decimate merged to 50% and rename
- 6) Create 3D View of decimated indoor 10% LAZ
- 7) Determine first floor elevation (Z) of indoor scan



Interactive 3D Model

- Indoor Scan
- UAV Point Cloud



Contact Us For a Free Quote:
Lewis Dixon: ldixon@cdpengineers.com