

Export to GsGO Layers from ArcGIS


&

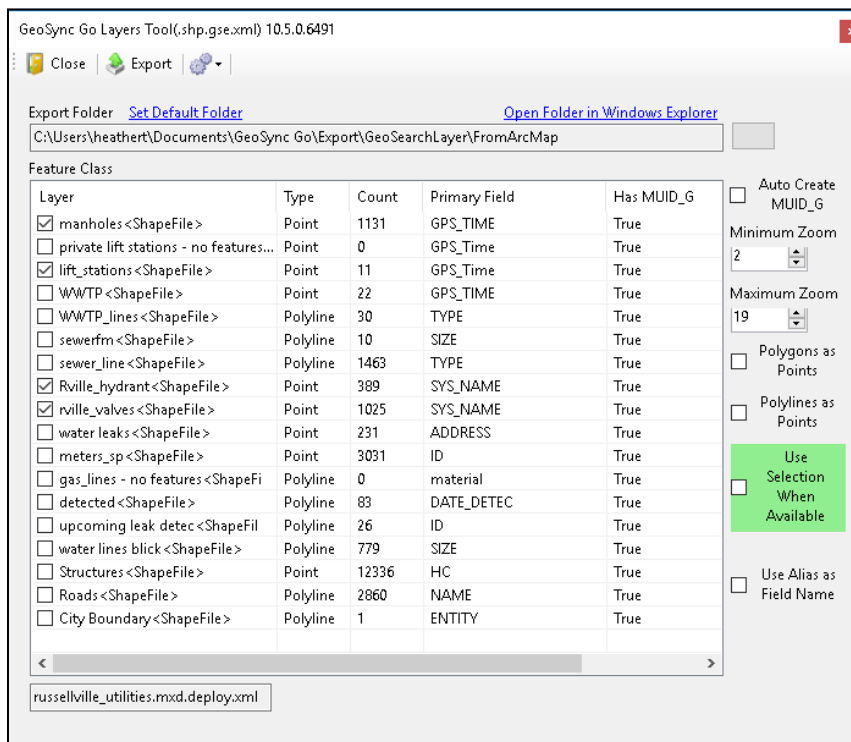
Publish in GsGO AM Tools

CDP Engineers, Inc. / MapSync Spatial Services

I. How to use the MapSync Publisher Toolbar



- In ArcGIS, be sure the **edit environment** is **closed** out of edit mode before performing the export.
- When the GIS layers are ready to export to GeoSync, press the **Export to GeoSync Go** tool  on the **MapSync Publisher Toolbar**
- Check the boxes for the layer(s) to export and press the **Export** tool
- The progress bar will display as the tool runs (unless the files are very small, and it finishes quickly)
- When the **Export** tool is complete, the layers have been converted to an **xml** format for use on the mobile devices. They are now ready to be published in **GsGO AM Tools** so they can be viewed in **GeoSync**.



NOTE: There is more advanced functionality on the **Export** tool than the typical workflow mentioned above, such as:

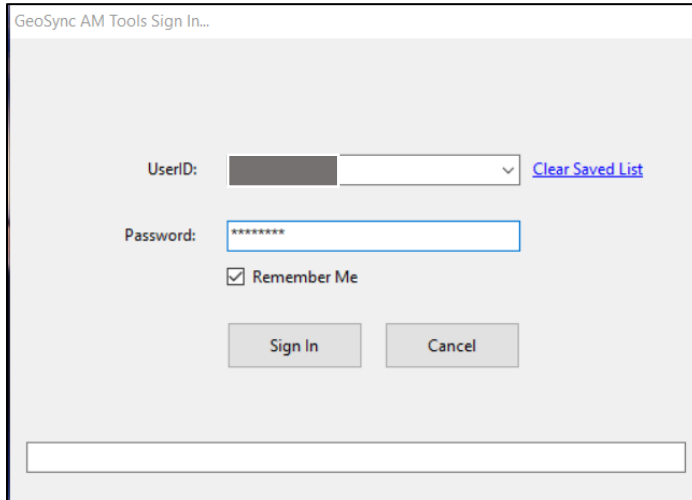
- capability to add the MUID_G field and generate the ID
- ability to export a selection set of features instead of the whole layer
- functionality to use aliases for field names
- tools for converting polygons and polylines to points

This advanced functionality is outside of the typical use. Many customers will not use these tools. If you have any questions about the advanced functionality of the **Export to GeoSync Go** tool, please contact a CDP technical support rep for assistance.

II. How to use GsGO AM Tools

Authorize:

- Enter the UserID and Password and check Remember Me
- Press **Sign In**




GeoSync AM Tools Sign In...

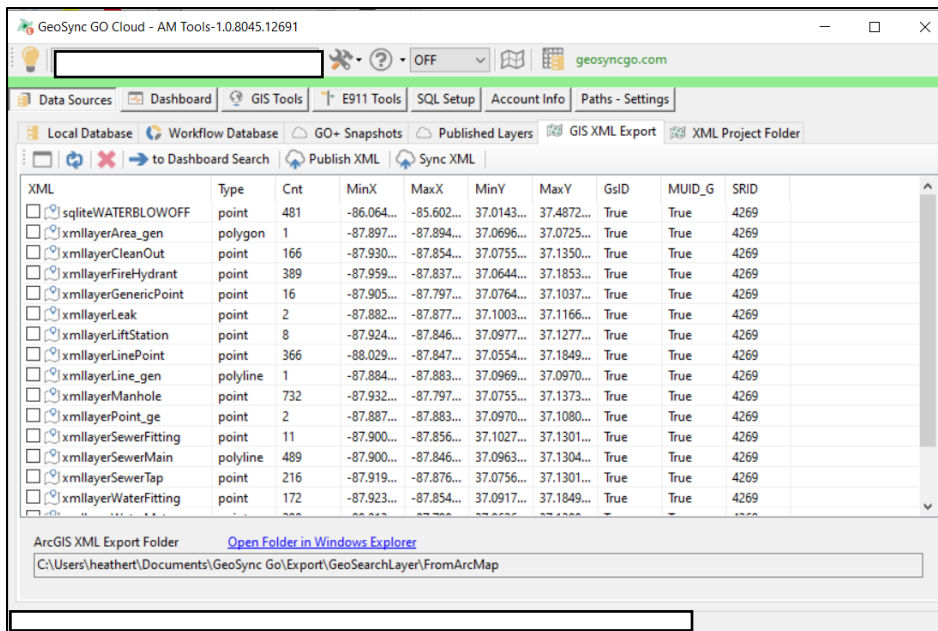
UserID: [Clear Saved List](#)

Password:

Remember Me

Layers Exported from ArcMap to AM Tools:

- With **Data Sources** selected, press the **GIS XML Export** tab
- Press the **Refresh** button  to display the export layers in the list



GeoSync GO Cloud - AM Tools-1.0.8045.12691

geo sync go.com

Data Sources | Dashboard | GIS Tools | E911 Tools | SQL Setup | Account Info | Paths - Settings

Local Database | Workflow Database | GO+ Snapshots | Published Layers | GIS XML Export | XML Project Folder

to Dashboard Search | Publish XML | Sync XML


XML	Type	Cnt	MinX	MaxX	MinY	MaxY	GsID	MUID_G	SRID
sqliteWATERBLOWOFF	point	481	-86.064...	-85.602...	37.0143...	37.4872...	True	True	4269
xmlayerArea_gen	polygon	1	-87.897...	-87.894...	37.0696...	37.0725...	True	True	4269
xmlayerCleanOut	point	166	-87.930...	-87.854...	37.0755...	37.1350...	True	True	4269
xmlayerFireHydrant	point	389	-87.959...	-87.837...	37.0644...	37.1853...	True	True	4269
xmlayerGenericPoint	point	16	-87.905...	-87.797...	37.0764...	37.1037...	True	True	4269
xmlayerLeak	point	2	-87.882...	-87.877...	37.1003...	37.1166...	True	True	4269
xmlayerLiftStation	point	8	-87.924...	-87.846...	37.0977...	37.1277...	True	True	4269
xmlayerLinePoint	point	366	-88.029...	-87.847...	37.0554...	37.1849...	True	True	4269
xmlayerLine_gen	polyline	1	-87.884...	-87.883...	37.0969...	37.0970...	True	True	4269
xmlayerManhole	point	732	-87.932...	-87.797...	37.0755...	37.1373...	True	True	4269
xmlayerPoint_ge	point	2	-87.887...	-87.883...	37.0970...	37.1080...	True	True	4269
xmlayerSewerFitting	point	11	-87.900...	-87.856...	37.1027...	37.1301...	True	True	4269
xmlayerSewerMain	polyline	489	-87.900...	-87.846...	37.0963...	37.1304...	True	True	4269
xmlayerSewerTap	point	216	-87.919...	-87.876...	37.0756...	37.1301...	True	True	4269
xmlayerWaterFitting	point	172	-87.923...	-87.854...	37.0917...	37.1849...	True	True	4269

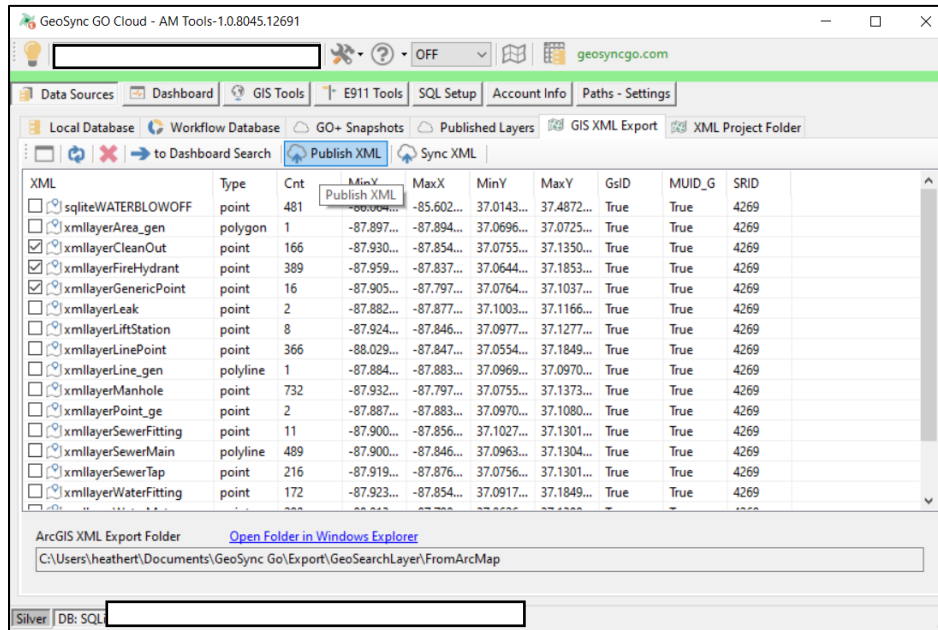
ArcGIS XML Export Folder [Open Folder in Windows Explorer](#)

C:\Users\heathert\Documents\GeoSync Go\Export\GeoSearchLayer\FromArcMap

- The **Cnt** column in this list will show the numbers of features in the workflow

Publish ArcGIS Layers to GeoSync for Use in the Field:

- With **Data Sources** selected, press the **GIS XML Export** tab
- Select the **Refresh** button  to display the export from ArcGIS layer list



- Check the checkboxes of the layer(s) to publish
- Press **Publish XML** (xml is the file format used for Go Plus) for a new layer or select **Sync XML** (for already published layers that have been updated in GIS and need to be republished)
- A **Publish Complete** message will appear on the toolbar to the right of the **Sync XML** tool when the publish is complete
- Then press the **Published Layers** tab and **refresh** the list
- Confirm the layer name and count (Cnt) on the **Published Layers** tab are the same as the layer name and count on the **GIS XML Export** tab